

ANNOTATION

How to annotate like a pro!

WHAT IS ANNOTATION?

Annotation involves adding notes to text, diagrams or art and then give an explanation of your experiments and ideas.

Purpose of annotation:

- To show the progress and process of the artwork
- Great way to remember what you did, how you did it and why you did it.
- To discuss and reflect on your artwork and its process



THREE TYPES OF ANNOTATION

- 1- Analysing your creative process
- 2- Describing a works formal elements
- 3- Annotating another artists work

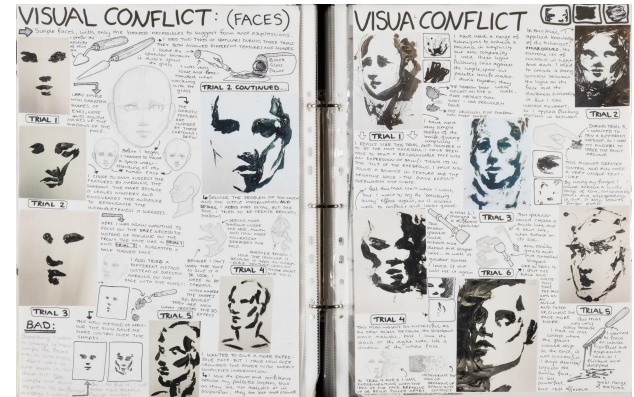


Within your sketchbook your annotation will be shown through both No.1 and No.2

QUESTIONS TO THINK WHILST ANNOTATING: NO1

Analysing your creative process

- How have you developed your ideas?
- How did your work or ideas change throughout your project?
- What materials, tools and techniques did you use?
- What do you like about what you have done?



HOW TO ANNOTATE YOUR CREATIVE PROCESS CONT...

•1- Describe (what)

-what is this image of?

-what have you done here?

-what was this stage of the project for?

•2- Explain (how)

-how was this work made?

-how did you produce particular effects?

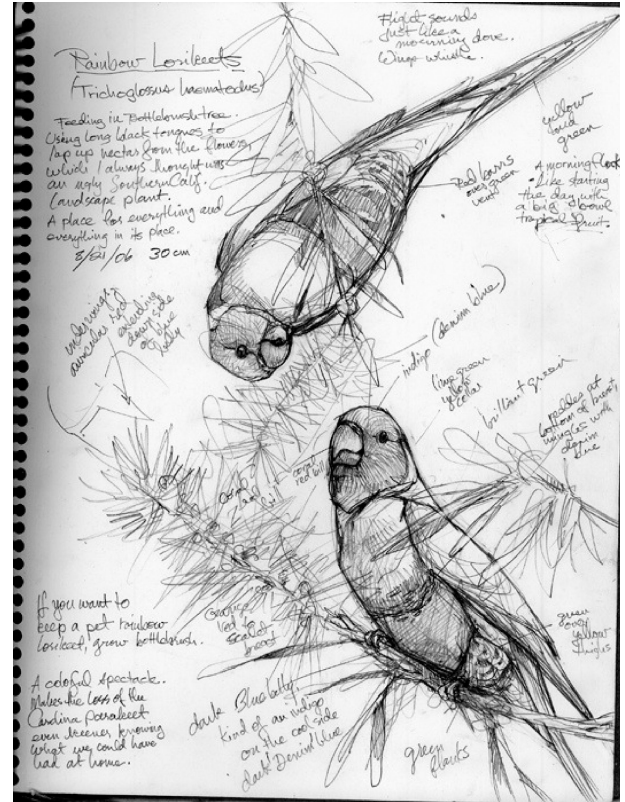
-how did you decide on the composition?

•3- Reflect (why)

-why did you use these specific methods?

-why do particular elements work better than others?

-what might you do differently next time?



GOOD AND BAD EXAMPLE OF ANNOTATION FOR CREATIVE PROCESS

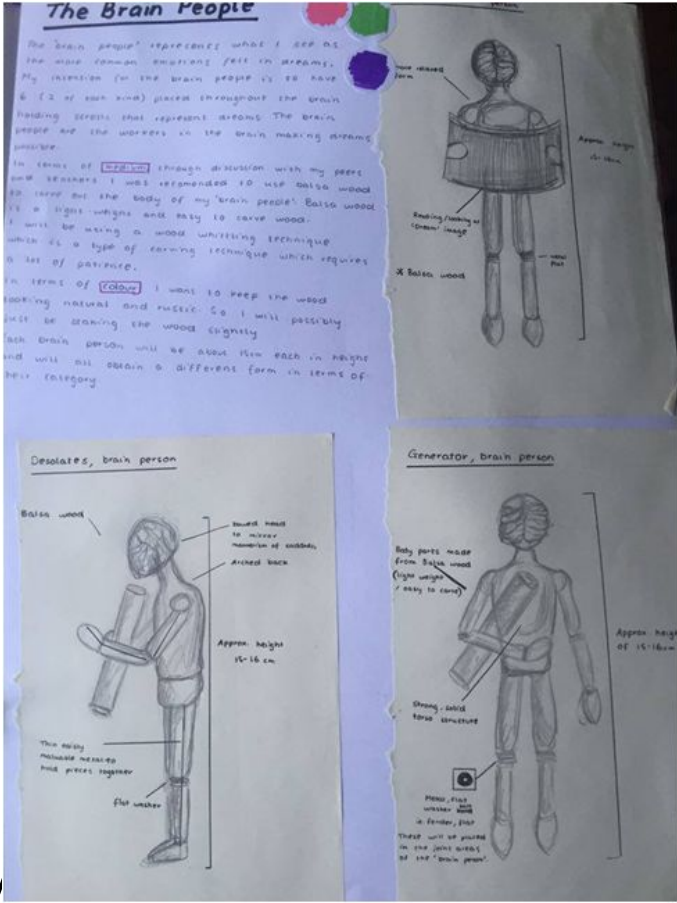


Basic Example:

Using a 2B pencil, I sketched the wooden figure. I was able to display **line** and **tone** by adding shading and darker lines in areas.

ADVANCED EXAMPLE:

I began this layout in my sketchbook to explore the “brain people” as one of my concepts. I started by creating a variety of sketches using a 2B pencil and referring to the mannequin in various positions. In order to enhance the **shapes** of the body within the brain people, I added **tone** and a variety of thickness of **lines**. The tone allows the mannequins to be viewed as **3D** ultimately showing **form** and enhances the positions they are sketched in.



The Brain People

The 'brain people' represents what I see as the more common emotions felt in dreams. My intention for the brain people is to have 6 (2 of each kind) placed throughout the brain holding scrolls that represent dreams. The brain people are the workers in the brain making dreams possible.

In terms of medium through discussion with my peers and teachers I was recommended to use balsa wood to carve out the body of my 'brain people'. Balsa wood is a light-weight and easy to carve wood. I will be using a wood whittling technique which is a type of carving technique which requires a lot of patience.

In terms of colour I want to keep the wood looking natural and rustic. So I will possibly just be staining the wood slightly

Each brain person will be about 15cm each in height and will all obtain a different form in terms of their category.

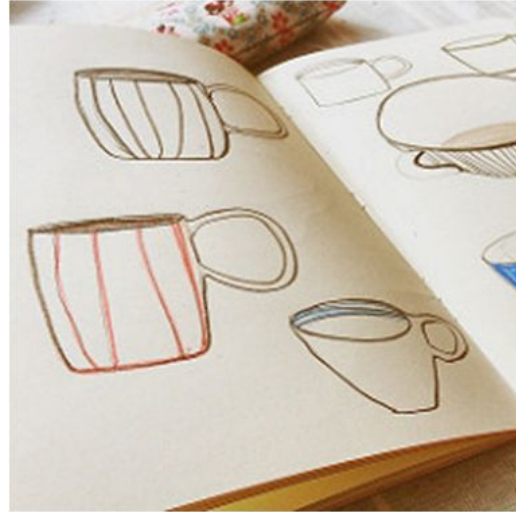
Some students like to underline or circle key art terms when annotating to keep track of how much "art language" they are using.



BASIC EXAMPLE OF ANNOTATION OF CREATIVE PROCESS

Using coloured pencils I sketched out a mug design that I can make out of **clay**.

I added some **lines** as a design I could paint on with **glaze**. I like the orange **colour** and think it may look good on the **clay** once it is fired.

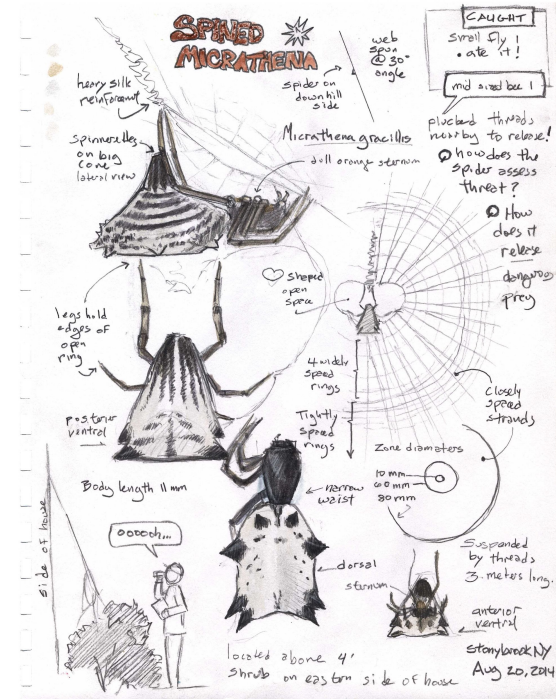


HOW TO ANNOTATE WHEN DESCRIBING A WORKS FORMAL ELEMENTS No.2

IMPORTANT ART VOCABULARY TO BE USED

ART ELEMENTS

- Line- thick, thin, smooth, curvy
- Shape- organic, angled, squared off, circular etc.
- Tone- dark, light, middle, highlights, focal point
- Texture- smooth, soft, hard, brittle, natural, manmade
- Form- solid, flat, depth
- Colour- monochromatic, complementary, harmonious etc.



To best annotate be sure to include at least two-three art elements!

LETS TRY ONE TOGETHER...

When annotating art, “tone” refers to the piece’s use of lights, darks, and shading.

Let’s discuss the following questions:

- Is the piece predominantly light, dark, or somewhere in the middle?
- Are there any highlights or dark areas that serve as a focal point in the work?
- Are there gentle gradients of tone, or sharp shifts from light to dark?



ANNOTATION OF FORMAL ELEMENTS EXAMPLE



Within this artwork there is an **emphasis** on **pattern**. The scales on the two fish are arranged in a way where the **lines** are curved throughout the body of the fish to create a pattern through **repetition**. This pattern also presents the viewers with a texture. The **colours** of the fish, red and blue, **contrast** the surrounding purple flowers, allowing the **focal point** of the artwork to be the fish.

WHAT OTHER ART ELEMENTS COULD BE ADDRESSED IN THIS ARTWORK?

REMEMBER TO ANNOTATE

Annotating is necessary in your visual diary since it is a marked component on your final grade!

It is important to both: analyse your creative process while describing the elements of art at the same time.

It helps you remember your process if you need to revisit your work.

It helps you reflect on what worked and what didn't.

